

FEATURES OF EXPERIMENTAL STRAIN DETERMINATION OF COMPRESSED-BENT ELEMENTS CONSIDERING THEIR DEFLECTION CURVE

© Krayinskyi P.I., Blikharskyi Ya.Z., Khmil R.Ye., 2014

In this article the methods of experimental acquiring of concrete and reinforcement strains is introduced. The following processing of experimental data is presented.

Key words: research, concrete structures, gauges, deformation reduction

Наведено методику експериментального замірювання деформацій верхньої фібри бетону, арматури з приведенням їх надалі для отримання реальних величин деформації.

Ключові слова: дослідження, залізобетонні конструкції, мікроіндикатори, індикатори, приведення, деформації

Problem definition

In experimental studies of the stress-strain state of structures gauges are commonly used. They are used to measure the linear deformation of different materials and can be applied in all spatial positions. Graduations of such devices range from 0.01 to 0.001 mm, which allows to measure the deformation of structures with high accuracy. However, at a specific position of the indicator relative to the structure surface, the measured value of the linear tensile (compression) deformation will differ from the actual. This occurs when the gauges holders are fastened to a surface of the structure which is in process of deformation takes the form of an arch (Fig. 1).

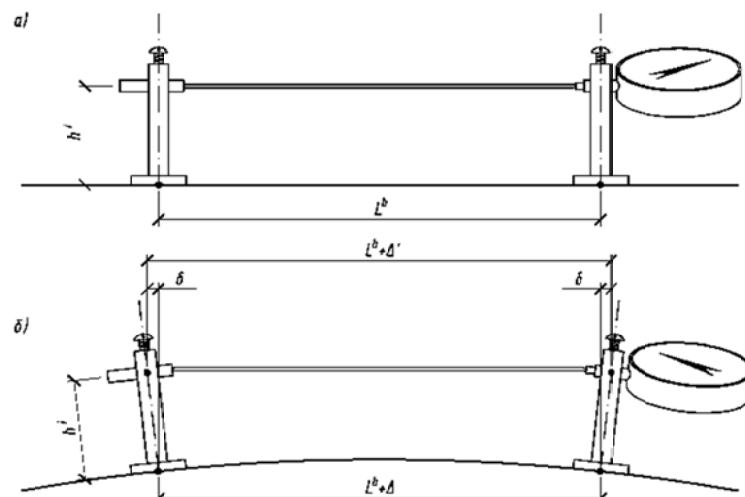


Fig. 1. Gauges position: a – before structure deformation, b – after structure deformation.

Figure 1 uses the following notation: L_b – original length of measuring device; Δ – actual value of linear deformation; $\Delta' = \Delta + 2\delta$ – measured value of the linear deformation.

As can be seen from Figure 1 the measured value of the linear deformation is different from the actual value for some deviation 2δ . This deviation appears due to the deflection of the indicator holders. Holders deflection is caused by the deformation of the surface to which they are fastened. Obviously, when processing experimental data acquired from gauges, such deviation must be considered, and therefore it is necessary to develop a method of reduction of the measured values of deformation to the actual ones.

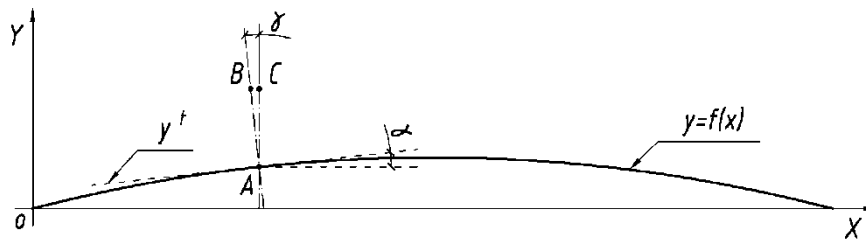


Fig. 3. The curved axis of the elements in the selected coordinate system

We accept that the position of the indicator holder during deformation of the element is perpendicular to the axis of the deflected element. Which means that position of the indicator holder prior to the element deformation is perpendicular to the axis X of the chosen coordinate system, and after deformation – perpendicular to the tangent y' . Since segment AB is perpendicular to y' and AC is perpendicular to axis X , we conclude that the angle of inclination of the tangent y' in accepted coordinate system is equal to γ . Therefore gradient in the equation of y' is equal to $\tan\gamma$.

Thus we obtain the desired value $\tan\gamma$ by defining the equation of the tangent y' to the curved axis of the elements at point A by the following relationship [5,6]:

$$y' = f(x_A) + f'(x_A)(x - x_A) \quad (2)$$

Where x_A – coordinate X of point A in a given coordinate system;

$f(x_A)$ – the value of the function $y = f(x)$ at point $A(x_A; y_A)$;

$f'(x_A)$ – the value of the first derivative of the function $y = f(x)$ at point $A(x_A; y_A)$.

The equation of element curved axis is obtained using an approximation of the real graph of the deflection of the element with a curve, such as a parabola.

Verification of the proposed model

Verification of the proposed method of linear deformities reduction performed on the basis of experimental data obtained from tests of prototype reinforced concrete column. Drawings of the column and its reinforcement scheme presented in Figure 4. Also in Figure 4 the way of fastening the indicator to the reinforcement is illustrated.

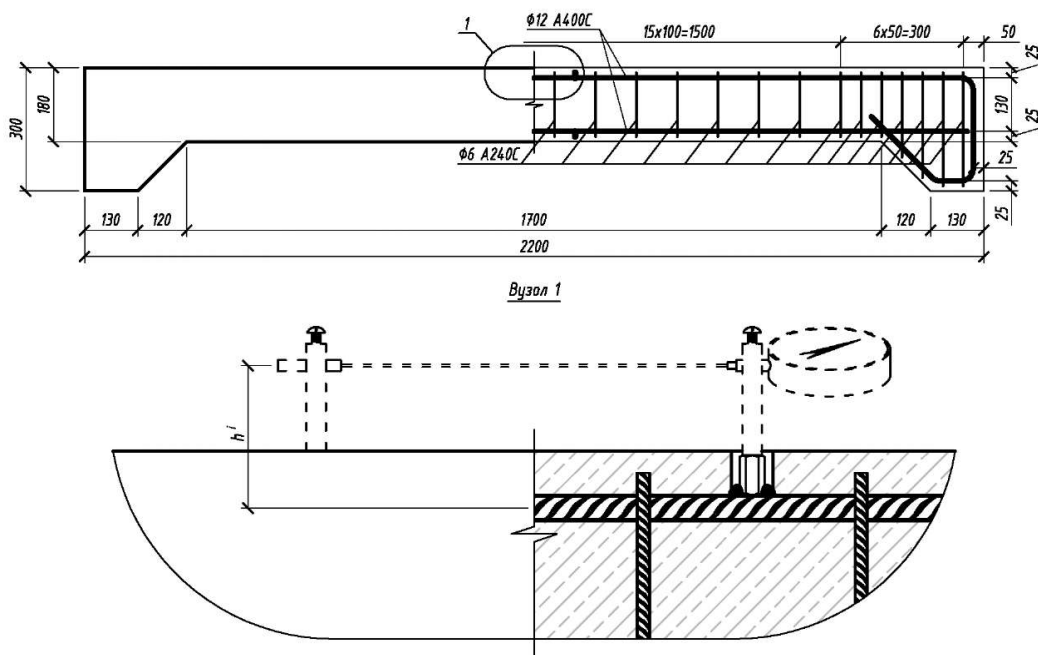


Fig. 4. Drawings of the column prototype and reinforcement scheme

The column loading was applied incrementally, 10 kN at each step maintaining load at each step for 15 minutes. The loading was applied with eccentricity $e = 150$ mm by the hydraulic jack. The test was conducted in a horizontal position.

To determine the deformation in compressed and stretched reinforcement, compressed concrete, concrete deformations along the height of the column section, gauges with graduations of 0.001 mm were applied. To measure the deflection of the column along its length 5 deflectometers were attached. General view of the column during testing and location of gauges and deflectometers is shown in Fig. 5, 6.



Fig. 5. General view of the experimental setup with the test specimen and the working section

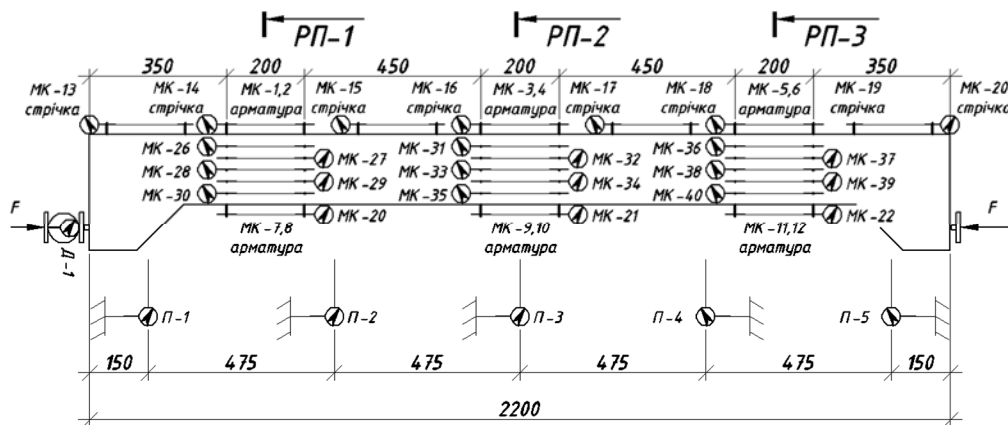


Fig. 6. Location of equipment

According to the data acquired from 5 deflectometers the deflection curves at each loading step were plotted (Fig. 6).

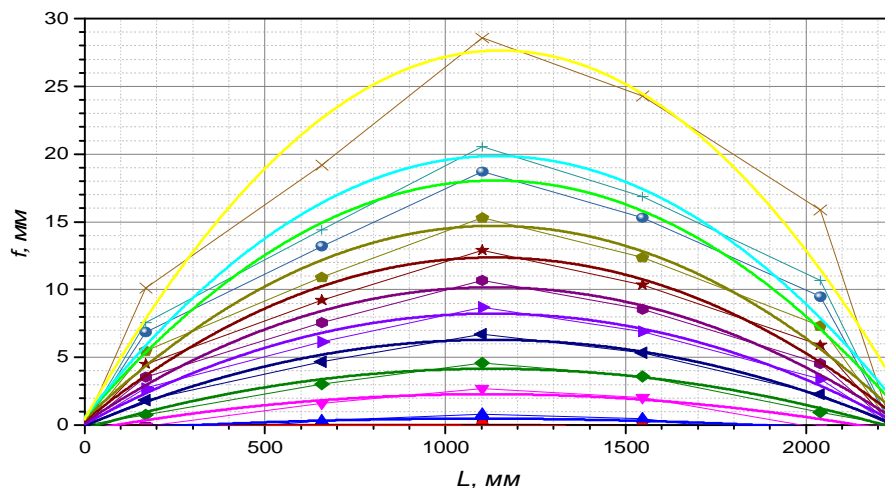


Fig. 6. Deflection f along the length L of the column at each step of loading.

To verify the proposed method of deformation reduction the following steps were taken:

1. From the data acquired from gauges the strain of reinforcement at each loading step are calculated. Diagram "load N – strain ε_{exp} " was plotted (Fig. 7a).
2. The reduction of calculated strain was performed. Diagram "load N – reduced strain ε'_{exp} " was plotted (Fig. 7b).
3. According to both diagrams reinforcement strain at yield level $\varepsilon_{s0,exp}$ and $\varepsilon'_{s0,exp}$ were determined.
4. Comparison of acquired strain $\varepsilon_{s0,exp}$ and $\varepsilon'_{s0,exp}$ from column test with ε_{s0} – actual yield strain of reinforcement bars determined during tensile test was conducted.

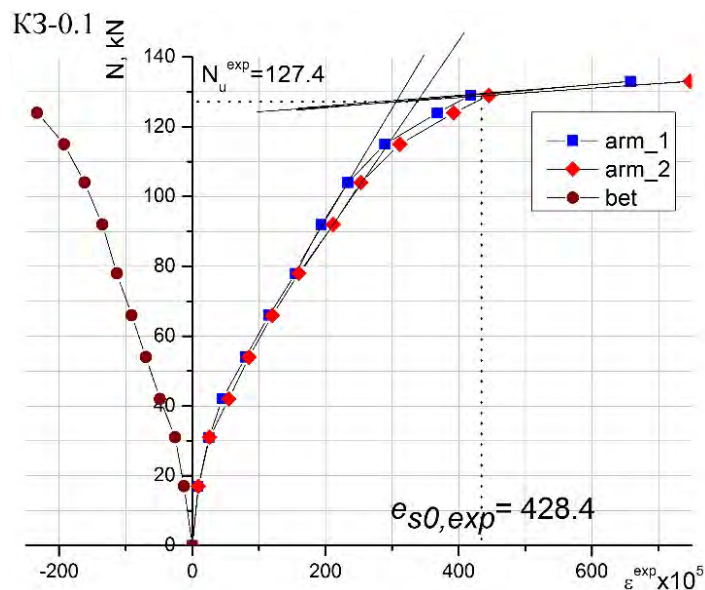


Fig. 7a. Strain of compressed concrete (bet) and stretched reinforcement (arm1, arm2) depending on the load applied to a prototype K3-0.1 before strain reduction

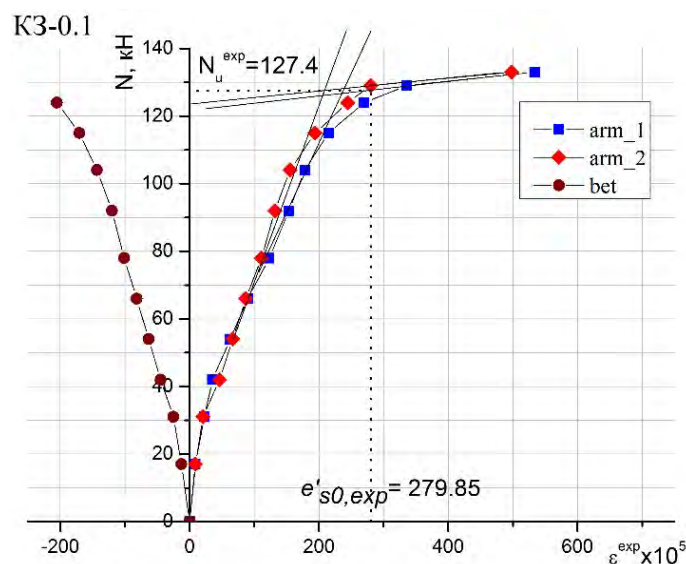


Fig. 7b. Strain of compressed concrete (bet) and stretched reinforcement (arm1, arm2) depending on the load applied to a prototype K3-0.1 after strain reduction

According to both diagrams (Fig. 7a, 7b) reinforcement strain at yield level are following:
 $\varepsilon_{s0,exp} = 428 \cdot 10^{-5}$ – before reduction; $\varepsilon'_{s0,exp} = 280 \cdot 10^{-5}$ – after reduction.

Actual yield strain of reinforcement bars determined during tensile test was: $\varepsilon_{s0} = 285 \cdot 10^{-5}$. As we can see this value is almost equal to reduced strain $\varepsilon'_{s0,exp}$, which means that strain reduction using proposed method give good results. General results of this study are given in Table 1.

Table 1

Results of strain reduction test data processing, considering its deflection curve

N, kN	Reinforcement strain before reduction, $\times 10^{-5}$	Reinforcement strain after reduction, $\times 10^{-5}$	Divergence, %	Concrete strain before reduction, $\times 10^{-5}$	Concrete strain after reduction, $\times 10^{-5}$	Divergence, %
31	25.31	10.14	40.1	25.76	19.93	77.4
42	64.52	35.57	55.1	48.48	37.36	77.0
54	98.26	54.51	55.5	69.70	52.87	75.9
66	132.26	73.54	55.6	90.91	68.33	75.2
78	166.75	94.00	56.4	113.13	85.15	75.3
92	201.49	113.66	56.4	113.13	79.34	70.1
104	241.94	136.66	56.5	161.62	121.12	74.9
115	298.76	173.89	58.2	192.42	144.39	75.0
124	378.16	223.71	59.2	232.83	173.42	74.5
129	429.53	258.14	60.1	-	-	-
133	698.76	447.33	64.0	-	-	-

After reinforcement strain reduction their values decreased approximately by 45%. This was due to significant height of indicator holder (45 mm approximately). Gauges for measuring concrete deformations were fastened on holders with the height of 17 mm. That’s why deviation between reduced and not reduced values was approximately 25%. Also it means that strain values also need reduce. Strain reduction method proposed in this article was also applied in other works [8].

Conclusions

1. A new method of reduction of deformations measured by dial gauges was developed.
2. After processing the test data of compressed-bent element reinforcement strain was reduced by 45% (indicator holder height 45 mm) and concrete strain reduced by 25% (indicator holder height 17 mm).
3. Reinforcement strain of tested element at yield level after reduction showed almost equal value to actual yield strain of reinforcement bars determined during tensile test.

1. Rymar Y.V. *Eksperymentalno-teoretychni doslidzhennia mitsnosti zalizobetochnykh balok pidsylenykh pid navantazhenniam* / Y.V. Rymar, D.I. Dubizhanskyi // *Visnyk Natsionalnoho universytetu "Lvivska politekhnika": Teoria i praktyka budivnytstva* - Lviv, 2007. - № 600. S.19-22. 2. Khmil R.Ye. *Napruzheno-deformovanyi stan zalizobetonnykh balok, poshkodzhenykh ahresyvnym seredovyshchem* / R.Ye. Khmil, R.V. Vashkevych // *Visnyk Natsionalnoho universytetu "Lvivska politekhnika": Teoria i praktyka budivnytstva* - Lviv, 2009. - № 655. S.278-285. 3. Tsarov Ye.S. *Metodyka pryvedennia zamirianykh eksperymentalnykh velychyn deformatsii materialiv na osnovi kryvoi deformuvannia* / Ye.S. Tsarov, R.Ye. Khmil, Z.Ya. Blikharskyi, A.R. Tereshko // *Zb. nauk. prats: Resursoekonomni materialy, konstrukcii, budivli ta sporudy* - Rivne, 2011. - vyp. 21. - S.144-151. 4. Yaroslav Blikharskyi *Research of strengthening effect reinforced concrete elements subjected to combined axial load and bending with different percent of additional reinforcement* / Yaroslav Blikharskyi, Roman Khmil, Oleg YOVCZYK // *Zeszyty Naukowe Politechniki Czestochowskiej. Budownictwo – Cz.*, 2014. 5. Hladunskyi V.N. *Matematyka oznachennia formuly zadachi* / V.N. Hladunskyi, H.A. Hladunskia // *Navchalnyi posibnyk, vydannia druhe, dopovnene* - L., 2004 S.300. 6. Shykin E.V. *Differencialnaia geometriya: pervoe znakomstvo* / E.V. Shykin, E.G. Pozniak // *Dn.: Izd-vo mgu, 1990. 53 s.* 7. *GOST 12004-81. Stal armaturnaia. Metody ispytaniia na rastiajenie. [Tekst]* – M.: *Ministerstvo chernoi metalurgii SSSR, 1990. – 10 s.* 8. Blikharskyi Ya.Z. *Mitsnist pozatsentrovno stysnutykh zalizobetonnykh elementiv pidsylenykh vuhletsevoiu strichkoiu* / Ya.Z. Blikharskyi, R.Ye. Khmil // *Chetverta Mizhnarodna naukovo-praktychna konferentsiia "Enerhoefektyvni tekhnologii v miskomu budivnytstvi ta hospodarstvi"* - O., 2014.